



# MAGIC REGATTAS

Nacra 17 – 2024 July 5<sup>th</sup> to 7<sup>th</sup>



## NOR and SAILING INSTRUCTIONS

Organization Authority (OA): YCPR

### 1. RULES

1.1 The regatta will be governed by the rules as defined in The Racing Rules of Sailing (RRS).

1.2 Rule 44.1 and RRS App. P2.1 will be changed so that Two-Turns Penalty is replaced by One-Turn Penalty.

### 2. REGISTRATION

2.1 Crews and boats have to register by completing the online entry form on the event website ( <http://www.ycpr.net/inscriptions/2024/index.php> ).

2.2 Entry fees are 70 € per boat. No fees for coaches. A boat registration will be confirmed as soon as the entry fees are paid.

2.3 Maximum number of boats at the regatta is 50.

### 3. BOAT PARK

3.1 The Organization Authority will not provide boat and rib place ashore. Sailors and coaches have to find a spot ashore for their boat, in their federation private area or in a shared area.

3.2 For those who don't already have a spot ashore in Marseille, please contact Louis Raynal : [louis.raynal@ampmetropole.fr](mailto:louis.raynal@ampmetropole.fr)

### 4. NOTICES TO COMPETITORS AND COACHES

4.1 Race committee intentions and notices to competitors will be posted on the WhatsApp group dedicated to the event in which coaches and athletes will be added after registration confirmation.

4.2 No signal ashore. As all competitors will not be hosted in the same training centers, all signals/information will be posted on the WhatsApp group.

### 5. SCHEDULE

July 5th	10:00 am	Coaches Meeting
	12:30pm	Races
July 6th-7th	To be defined	Races
July 7th	After racing	Prize giving ceremony at YCPR Training Center



5.2 No maximum races per day.

5.3 To alert competitors that a race or sequence of races will begin soon, the orange starting line flag will be displayed (with one sound) for at least two minutes before a warning signal is made.

## 6. CLASS FLAGS

6.1 The description of Class flag as follows:

- Nacra 17 – Green flag

## 7. RACING AREA

7.1 The regatta will be held in Marseille South Bay.

7.2 Appendix A shows the Racing areas.

## 8. COURSES

8.1 Appendix B shows the courses, including the course signals.

8.2 If a gate is either set or replaced by a single mark, it shall be left to port.

## 9. MARKS

9.1 Marks 1 and 4s/ 4p will all be inflatable buoys.

9.2 The color and shape of inflatable marks and laid marks will be as follows:

- Course marks 1, 4s, 4p – YCPR Orange conical
- 1a – YCPR orange conical
- Finish mark – black conical

9.3 Changing mark = YCPR green conical

## 10. START

10.1 Starting sequence : 5 / 4 / 1 / START

10.2 The start line is between :

- Pin = organization vessel
- Race committee = YCPR vessel

## 10. TIME LIMITS AND TARGET TIMES

Boat	Time limit	Finish window	Target time
Nacra 17	40 min	10 min	25 min



## 11. PROTEST AND REQUESTS FOR REDRESS

11.1 Protests and requests for redress or reopening shall be delivered in the WhatsApp Group within the appropriate time limit.

11.2 As sailors and coaches will not be in the same training centers ashore, hearings will be by WhatsApp video.

11.3 To request correction of an alleged error in a posted race or series results, a boat or a coach may send its request to the Race Committee on the WhatsApp group.

## 12. SCORING

12.1 When fewer than 4 races have been completed, a boat's score will be the total of her race score. When 4 or more races have been completed, a boat's score will be the total of her race score excluding her worst score.

12.2 To request correction of an alleged error in posted results, a competitor may send a Whatsapp to the Race Committee in the Whatsapp Group dedicated.

12.3 Results will be posted on the Whatsapp group.

## 13. OFFICIAL BOATS

13.1 Official boats will be marked as follows:

Boat	Flag
Race Committee / start and arrival boat / mark layer	Yellow or or orange flag with Orga
Media	Orange flag with Media

## 14. DISCLAIMER OF LIABILITY

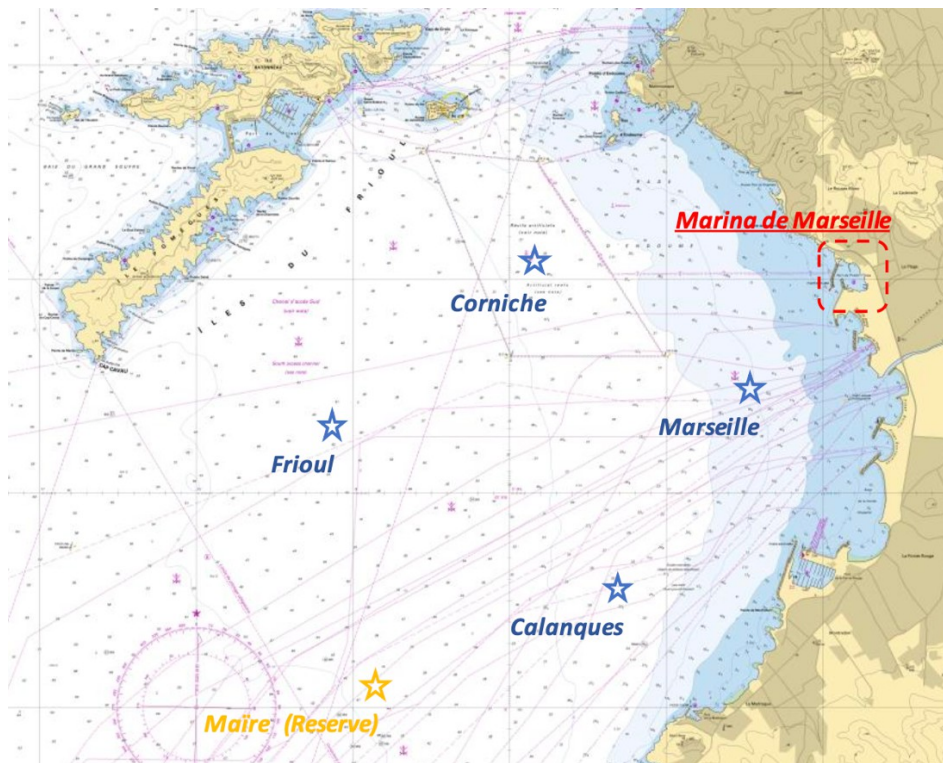
14.1 Competitors participate in the regatta entirely at their own risk. The Organizing Authority will not accept any liability for material damage or personal injury or death sustained in conjunction with or prior to, during, or after the regatta.

## CONTACT

Clara GEILING - +33 6 34 15 78 72

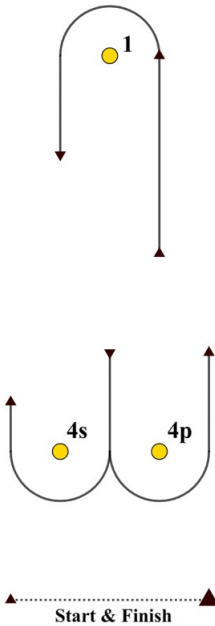
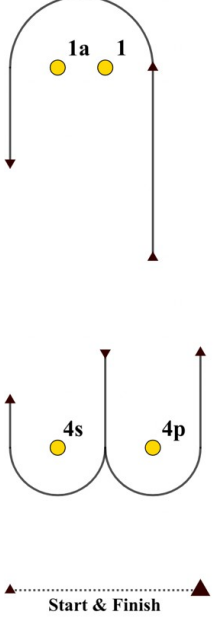
[clara@ycpr.net](mailto:clara@ycpr.net)

## APPENDUM A : POSSIBLE RACE AREAS





## APPENDUM B : COURSES

L	WINDWARD / LEEWARD	LA	WINDWARD / LEEWARD with spreader mark
			
LR	WINDWARD / LEEWARD with reaching finish	LRA	WINDWARD / LEEWARD with spreader mark and reaching finish
